

# SHORING CATALOG



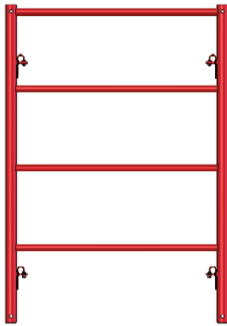
**DSS** 



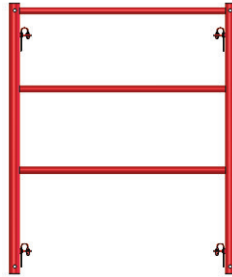
## TABLE OF CONTENTS

<b>PRODUCTS &amp; INFORMATION</b>	<b>PAGE</b>
<b>HL SHORING FRAMES (10k/leg)</b> .....	<b>3</b>
<b>STEEL SHORING ACCESSORIES</b> .....	<b>4</b>
<b>SHORING TOWER</b> .....	<b>5</b>
<b>SHORING JACK</b> .....	<b>6</b>
<b>SHORING FRAME ALLOWABLE WORKING LOADS</b> .....	<b>7</b>
<b>ALUMINUM SHORING FRAMES</b> .....	<b>8</b>
<b>ALUMINUM SHORING ACCESSORIES</b> .....	<b>9</b>
<b>ALUMINUM SHORING TOWER</b> .....	<b>10</b>
<b>ALUMINUM SHORING JACK</b> .....	<b>11</b>
<b>7.25" DOUBLE FLANGE STRINGER</b> .....	<b>12</b>
<b>7.5"ALUMINUM STRINGER SHAB75xxxPN</b> .....	<b>13</b>
<b>6.5"ALUMINUM STRINGER SHAB65xxxBF4</b> .....	<b>14</b>
<b>6.5"ALUMINUM STRINGER SHAB65xxxPN</b> .....	<b>15</b>
<b>CROSS BRACES FOR SHORING FRAMES</b> .....	<b>16-17</b>
<b>POST SHORES</b> .....	<b>18</b>

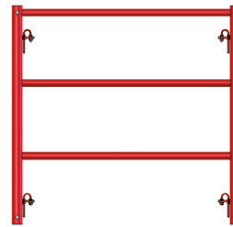
## HL SHORING FRAMES (10K/LEG)



**SHF4W6H-D48-P**  
4'x6' Shoring Frame  
68.4 lbs



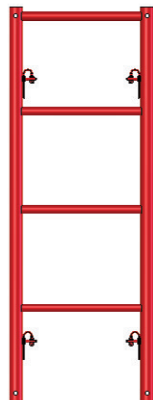
**SHF4W5H-D48-P**  
4'x5' Shoring Frame  
58.9 lbs



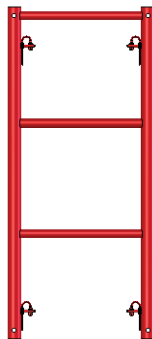
**SHF4W4H-D36-P**  
4'x4' Shoring Frame  
51.2 lbs



**SHF4W3H-D24-P**  
4'x3' Shoring Frame  
38.6 lbs



**SHF2W6H-D48-P**  
2'x6' Shoring Frame  
57.4 lbs



**SHF2W5H-D48-P**  
2'x5' Shoring Frame  
48.5 lbs



**SHF2W4H-D36-P**  
2'x4' Shoring Frame  
41.3 lbs



**SHF2W3H-D24-P**  
2'x3' Shoring Frame  
29.1 lbs

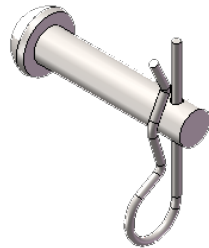
### Shoring Frame Information

- 2.375" (2-3/8") OD Leg Tube, 0.156" (4mm) Wall Thickness
- Uses SHPNCP-E Coupling Pin
- Standard Color Red
- First lock 13" from top of frame leg (6' tall frames)
- First lock 7" from top of leg (5', 4', and 3' tall frames)
- D-Lock

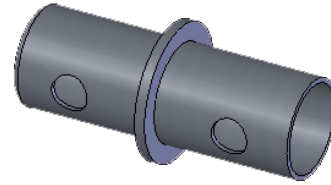
## STEEL SHORING ACCESSORIES



**SHPNCP-E**  
Shoring Frame Coupling  
Pin 1.9" OD  
1.4 lbs



**SHPNRH**  
5/8" x 3" Riven w/Hitch Pin (3.8mm)  
0.4 lbs



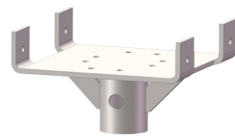
**SHPNCP**  
Shoring Coupling Pin  
1.54 lbs



**SHBPBJ-36**  
36" Hi-load Shoring Jack (1.9" x 36")  
11.1 lbs



**SHBPBJ**  
Shoring Screw Jack  
13.45 lbs



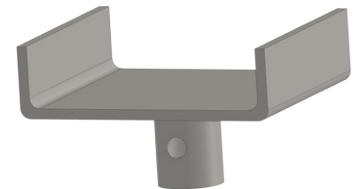
**SHUHTW88**  
8" X 8" U-Head  
6.81 lbs



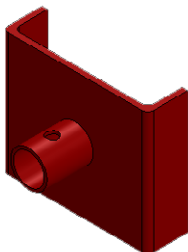
**SHBPUJ**  
U-Head Screw Jack  
18.52 lbs



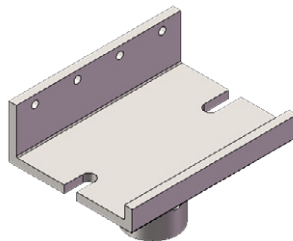
**SHSB23H**  
23" Wide Hanging Side Bracket  
12.55 lbs



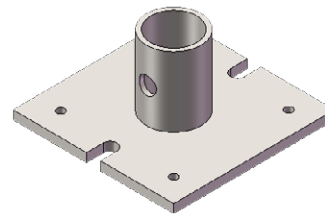
**SHBPUH88**  
U-HEAD  
12.6 lbs



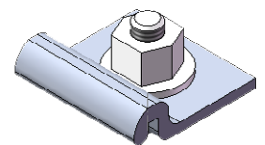
**SHBPUH89**  
8"x9" Shoring U-Head (for Screw)  
12.6 lbs



**SHBPJH86**  
8"x5" Shoring J-Head (for Screw)  
8.9 lbs



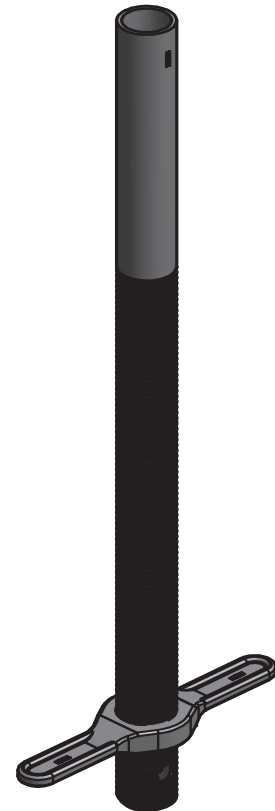
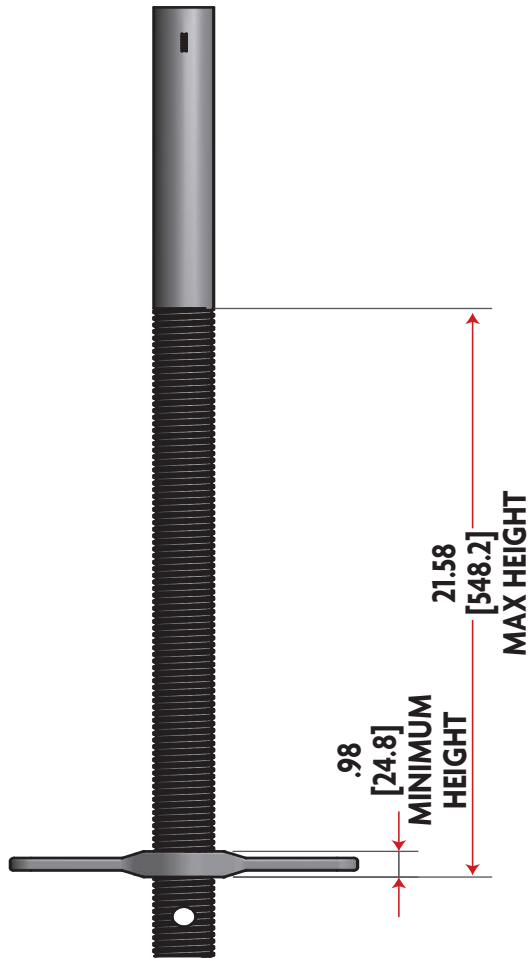
**SHBPFH77**  
7"x7" Shoring Base Plate (for Screw)  
6.0 lbs



**SHAB-CMPA**  
Aluminum Beam A-Clip  
0.35 lbs



## SHORING JACK



Product Code	Description	Load @ Minimum Height (lb-f)	Load @ Maximum Height (lb-f)
SHBPBJ-36	Hi-Load Screw Jack 36"	14,250	12,300

(Safe Working Loads are based on a 3:1 Safety Factor.)



## SHORING FRAME ALLOWABLE WORKING LOADS

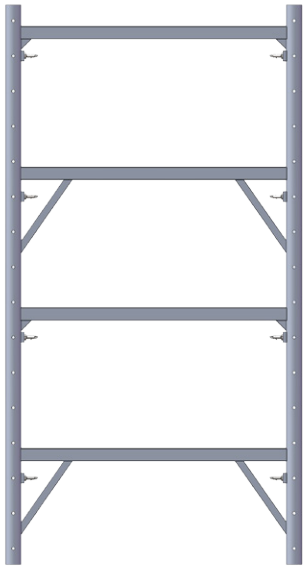
POUNDS PER LEG - SEE NOTES BELOW TABLE

NUMBER OF TIERS	Maximum Safe Working Load per leg (Lbs) - Screw Leg Extension 12"	Maximum Safe Working Load per leg (Lbs) - Screw Leg Extension 24"	Maximum Safe Working Load per leg (Lbs) - Screw Leg Extension 36"	Maximum Safe Working Load per leg (Lbs) - Screw Leg Extension 48"
1	14,400	12,400	10,000	8,500
2	13,200	11,100	9,000	8,400
3	11,600	10,800	8,600	8,200
4	10,600	9,500	8,300	8,000
5	10,200	9,100	8,000	7,700
6	10,000	8,700	7,700	7,400
7	9,900	8,600	7,300	7,200
8	9,800	8,500	7,000	7,000
9	9,700	8,400	6,750	6,750
10	9,600	8,300	6,500	6,500

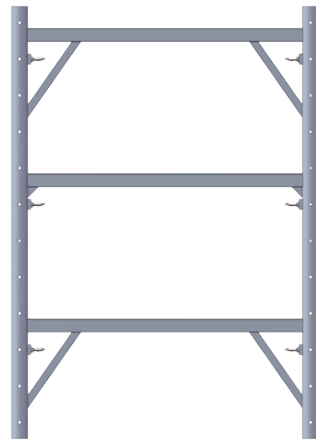
**Notes:**

1. Tier refers to number of frames connected vertically
2. Screw leg extension is the total extension of the screws extended equally top and bottom
3. The Safety factor for allowable working loads is 2.5:1
4. Consult with an Engineer trained in shoring design for any shoring tower over 50 ft. in height

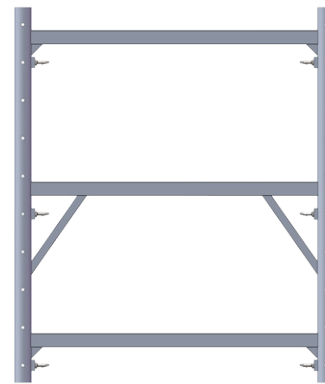
## ALUMINUM SHORING FRAMES



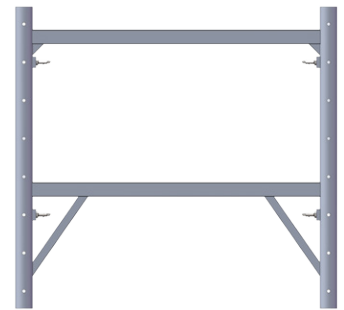
**SHHLF48JL48**  
4'Wx8'H Aluminum Shoring Frame  
JL-Lock  
48" Spacing  
42.2 lbs



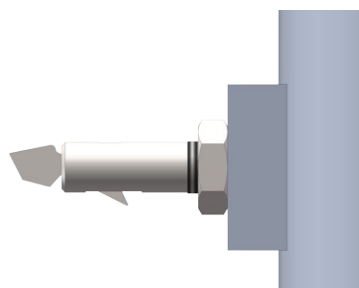
**SHHLF46JL48**  
4'Wx6'H Aluminum Shoring Frame  
JL-Lock  
48" Spacing  
32.2 lbs



**SHHLF45JL48**  
4'Wx5'H Aluminum Shoring Frame  
JL-Lock  
48" Spacing  
28.2 lbs



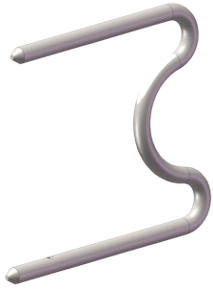
**SHHLF44JL24**  
4'Wx4'H Aluminum Shoring Frame  
JL-Lock  
24" Spacing  
21.1 lbs



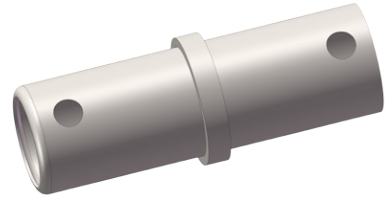
Jet Lock



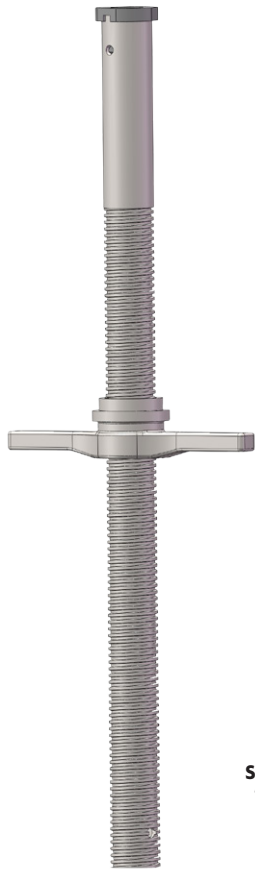
## ALUMINUM SHORING ACCESSORIES



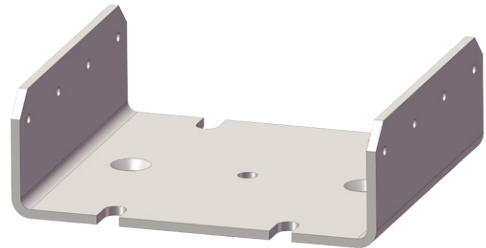
**SHHLUP6**  
6" Shaped Lock Pin  
1 Lb



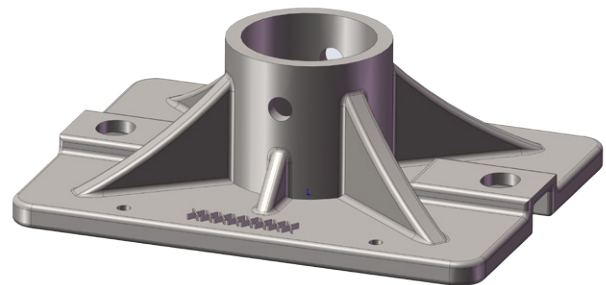
**SHHLCP**  
Coupling Pin  
1.21 Lbs



**SHHLSJ**  
Screw Jack  
11.20 Lbs

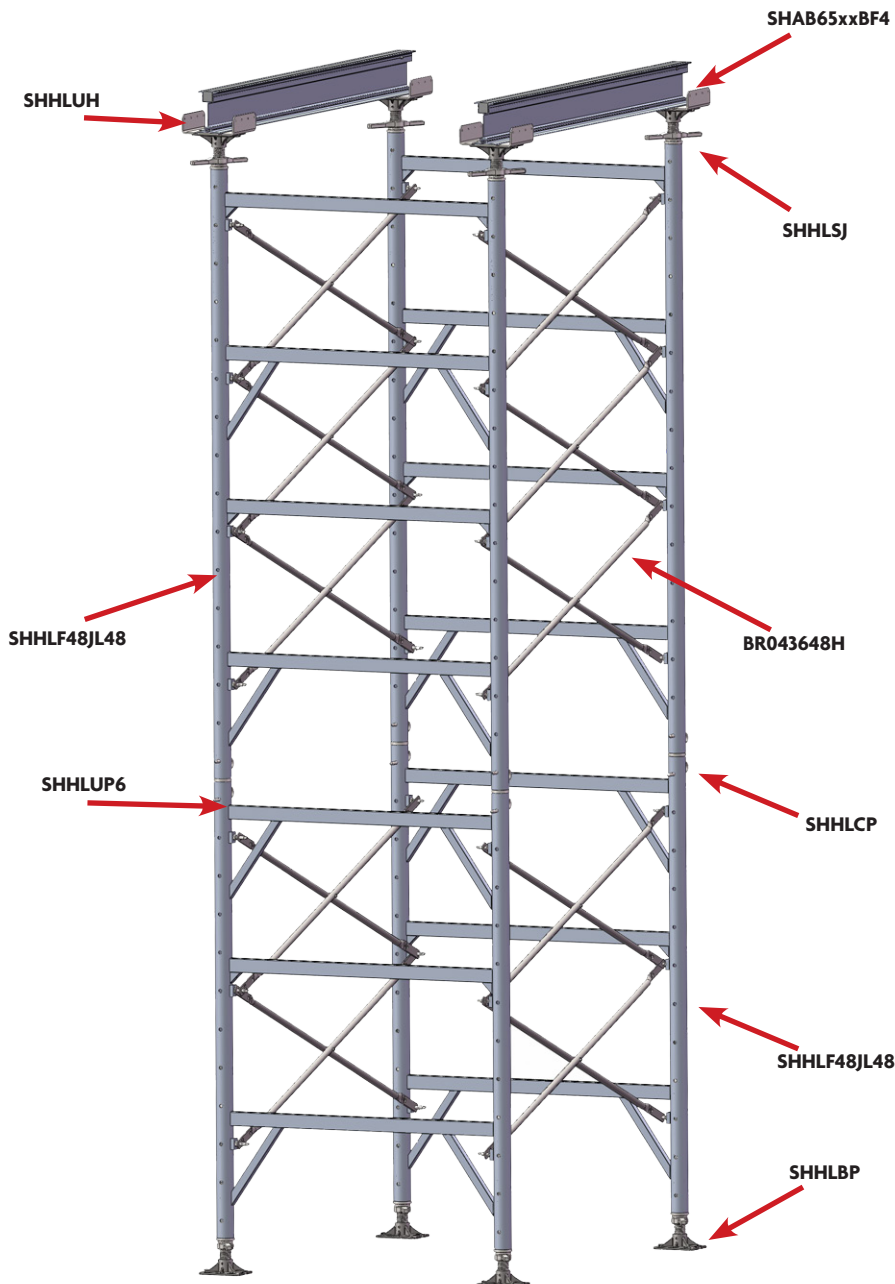


**SHHLUH**  
8" X 9" U-Head  
7.18 Lbs



**SHHLBP**  
Base Plate  
5.28 Lbs

## ALUMINUM SHORING TOWER



### SHORING TOWER CAPACITY

A 3 tiers DSS's Shoring Tower has a Maximum Safe Working Load Capacity per leg of:

**12,500 lb [55.61 kN]**

These towers have been tested having screw jacks extended 12" at the top and 12" at the bottom. Safety factor 2.5:1

### NOTES:

1. Tier refers to number of frames connected vertically
2. Consult with an Engineer trained in shoring design for any shoring tower over 50 ft. in height, and when lateral bracing is required.
3. DSS recommends lateral bracing for towers 3 tiers or taller. A capacity reduction for dead load should be accounted for.
4. If no suitable tying points are available, consider using other means of stabilization such as guy wires or other means as an alternative.
5. All horizontal bracing should be tied to permanent structures such as walls, columns, where possible.
6. Bracing members cannot be fixed to the frame horizontal members.
7. Fixing of lateral bracing shall be positioned at the junction of vertical legs with the bracing tube.

## SHORING JACK



HALF METER OF ADJUSTMENT.

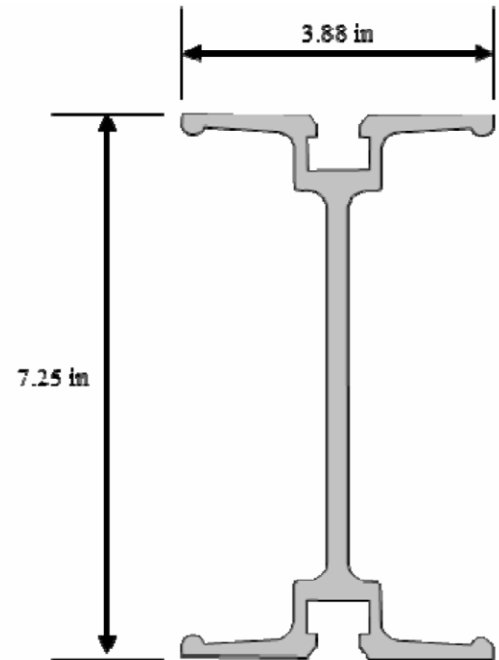
Product Code	Description	Load @ Maximum Height (lb·f)
SHHLSJ	Screw Jack w/ Nut	18,000

(Safe Working Loads are based on a 3:1 Safety Factor.)

## 7.25" DOUBLE FLANGE STRINGER

### LOAD CHART

Span (ft)	Deflection (in) L/360	Load (lbs/ft) L/360	Deflection (in) L/270	Load (lbs/ft) L/270
4	0.13	5194	0.18	5194
5	0.17	3324	0.22	3324
6	0.20	1988	0.27	2308
7	0.23	1252	0.31	1669
8	0.27	839	0.36	1118
9	0.30	589	0.40	785
10	0.33	429	0.44	572
11	0.37	323	0.49	430
12	0.40	249	0.53	331
13	0.43	195	0.58	261
14	0.47	156	0.62	209
15	0.50	127	0.67	170
16	0.53	105	0.71	140
17	0.57	87	0.76	117
18	0.60	74	0.80	98
19	0.63	63	0.84	83
20	0.67	54	0.89	72



### PHYSICAL SPECIFICATIONS

Overall Height	7.25 in
Flange Width (both)	3.88 in
Cross Sectional Area	3.65 in <sup>2</sup>
Nominal Weight	4.4 lb/ft
Moment of Inertia (I <sub>xx</sub> )	28.41 in <sup>4</sup>
Section Modulus, S <sub>xx</sub> (min)	7.84 in <sup>3</sup>
Modulus of Elasticity, E	10.2E6 psi

Deflection data based on simple spans.

F.O.S - 2.2 to 1. Stringers to be laterally supported.

All data is provided as guidelines only.

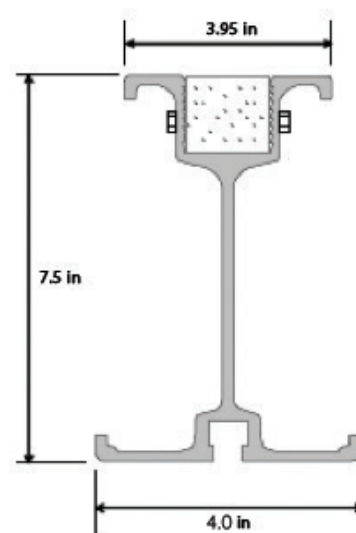
Direct Scaffold Supply is not responsible for errors or omissions.

(Safe Working Loads are based on a 4:1 Safety Factor.)

## 7.5" ALUMINUM STRINGER SHAB75xxPN

### LOAD CHART

Span (ft)	Deflection (in) L/360	Load (lbs/ft) L/360	Deflection (in) L/270	Load (lbs/ft) L/270
4	0.13	4149	0.18	4149
5	0.17	3319	0.22	3319
6	0.20	2373	0.27	2581
7	0.23	1494	0.31	1896
8	0.27	1001	0.36	1335
9	0.30	703	0.40	937
10	0.33	512	0.44	683
11	0.37	385	0.49	513
12	0.40	297	0.53	395
13	0.43	233	0.58	311
14	0.47	187	0.62	249
15	0.50	152	0.67	202
16	0.53	125	0.71	167
17	0.57	104	0.76	139
18	0.60	88	0.80	117
19	0.63	75	0.84	100
20	0.67	64	0.89	85



### PHYSICAL SPECIFICATIONS

Overall Height	7.50 in
Base Width	4.00 in
Width, Inverted Top Hat Section	3.95 in
Cross Sectional Area (w/o nailer)	4.0 in <sup>2</sup>
Nominal Weight (w/nailer)	5.8 lb/ft
Moment of Inertia (I <sub>xx</sub> )	34.25 in <sup>4</sup>
Section Modulus, S <sub>xx</sub> (min)	8.76 in <sup>3</sup>
Modulus of Elasticity, E	10.1E6 psi

Deflection data based on simple spans.

F.O.S - 2.2 to 1. Stringers to be laterally supported.

All data is provided as guidelines only.

Direct Scaffold Supply is not responsible for errors or omissions.

(Safe Working Loads are based on a 4:1 Safety Factor.)

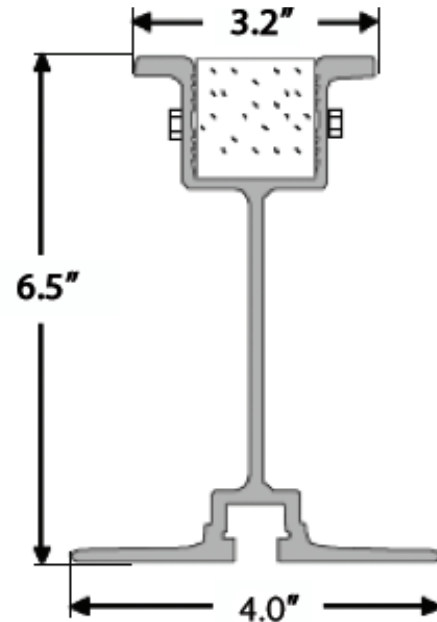
## 6.5" ALUMINUM STRINGER SHAB65xxxBF4

### LOAD CHART

Span (ft)	Deflection (in) L/360	Load (lbs/ft) L/360	Deflection (in) L/270	Load (lbs/ft) L/270
4	0.13	3151	0.18	3151
5	0.17	2017	0.22	2017
6	0.20	1188	0.27	1188
7	0.23	748	0.31	957
8	0.27	501	0.36	668
9	0.30	352	0.40	469
10	0.33	257	0.44	342
11	0.37	193	0.49	257
12	0.40	148	0.53	198
13	0.43	117	0.58	156
14	0.47	94	0.62	125
15	0.50	76	0.67	101
16	0.53	63	0.71	84
17	0.57	52	0.76	70
18	0.60	44	0.80	59
19	0.63	37	0.84	50
20	0.67	32	0.89	43

### PHYSICAL SPECIFICATIONS

Overall Height	6.50 in
Base Width	4.00 in
Width, Inverted Top Hat Section	3.20 in
Cross Sectional Area (w/o nailer)	2.52 in <sup>2</sup>
Nominal Weight (w/nailer)	4 lb/ft
Nominal Weight (w/o nailer)	3.15 lb/ft
Moment of Inertia (I <sub>xx</sub> )	15.91 in <sup>4</sup>
Section Modulus, S <sub>xx</sub> (min)	4.35 in <sup>3</sup>
Modulus of Elasticity, E	10.2E6 psi



Deflection data based on simple spans.

F.O.S - 2.2 to 1. Beam to be laterally supported.

All data is provided as guidelines only.

Direct Scaffold Supply is not responsible for errors or omissions.

(Safe Working Loads are based on a 4:1 Safety Factor.)

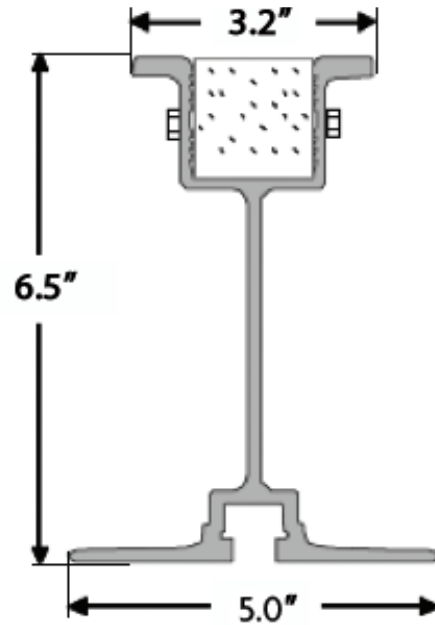
## 6.5" ALUMINUM STRINGER SHAB65xxxPN

### LOAD CHART

Span (ft)	Deflection (in) L/360	Load (lbs/ft) L/360	Deflection (in) L/270	Load (lbs/ft) L/270
4	0.13	3151	0.18	3151
5	0.17	2017	0.22	2017
6	0.20	1188	0.27	1188
7	0.23	748	0.31	957
8	0.27	501	0.36	668
9	0.30	352	0.40	469
10	0.33	257	0.44	342
11	0.37	193	0.49	257
12	0.40	148	0.53	198
13	0.43	117	0.58	156
14	0.47	94	0.62	125
15	0.50	76	0.67	101
16	0.53	63	0.71	84
17	0.57	52	0.76	70
18	0.60	44	0.80	59
19	0.63	37	0.84	50
20	0.67	32	0.89	43

### PHYSICAL SPECIFICATIONS

Overall Height	6.50 in
Base Width	5.00 in
Width, Inverted Top Hat Section	3.20 in
Cross Sectional Area (w/o nailer)	2.82 in <sup>2</sup>
Nominal Weight (w/nailer)	4.17 lb/ft
Nominal Weight (w/o nailer)	3.32 lb/ft
Moment of Inertia (I <sub>xx</sub> )	17.42 in <sup>4</sup>
Section Modulus, S <sub>xx</sub> (min)	4.36 in <sup>3</sup>
Modulus of Elasticity, E	10.2E6 psi



Deflection data based on simple spans.

F.O.S - 2.2 to 1. Beam to be laterally supported.

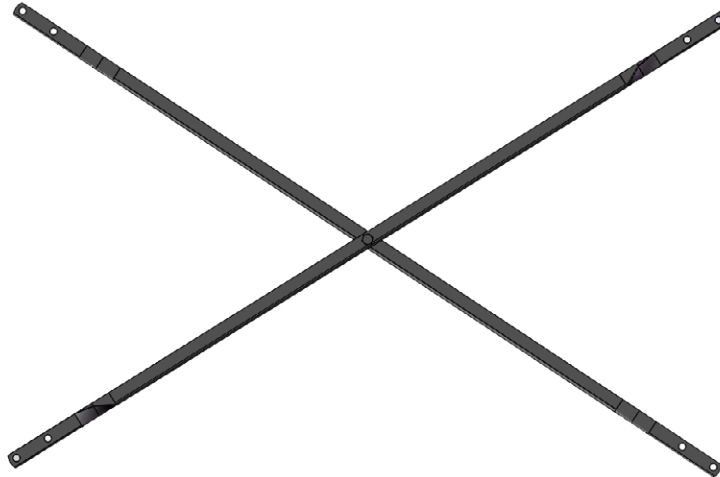
All data is provided as guidelines only.

Direct Scaffold Supply is not responsible for errors or omissions.

(Safe Working Loads are based on a 4:1 Safety Factor.)

## ANGLE IRON CROSS BRACES

1.25"x1.25"x0.125"

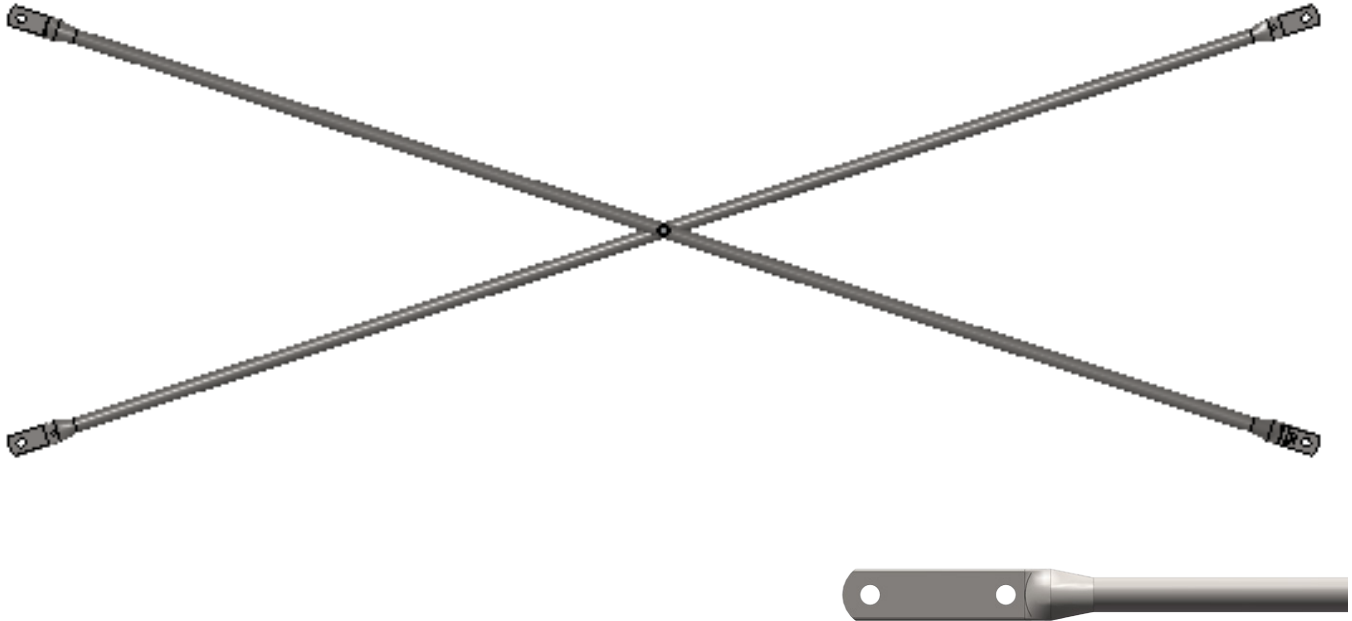


Lock Spacing	Bay Length					
	4'	5'	6'	7'	8'	10'
24"	BRA042436H	BRA052436H	BRA062436H	BRA072436H	BRA082436H	BRA102436H
36"	BRA042436H	BRA052436H	BRA062436H	BRA072436H	BRA082436H	BRA102436H
	BRA043648H	BRA053648H	BRA063648H	BRA073648H	BRA083648H	BRA103648H
48"	BRA043648H	BRA053648H	BRA063648H	BRA073648H	BRA083648H	BRA103648H



## TUBE CROSS BRACES

1"x2mm



Lock Spacing	Bay Length					
	4'	5'	6'	7'	8'	10'
12"				BR0712H		BR01012H
24"	BR0424H	BR0524H	BR0624H	BR0724H	BR0824H	BR01024H
27-3/4"			BR0627H	BR0727H		BR01027H
36"	BR043648H	BR053648H	BR063648H	BR0736H	BR083648H	BR01036H
				BR073648H		BR0103648H
48"	BR043648H	BR053648H	BR063648H	BR0748H	BR083648H	BR01048H
				BR073648H		BR0103648H

CUSTOM SIZES ARE AVAILABLE UPON REQUEST. MINIMUM ORDER QUANTITY MAY APPLY.

## POST SHORES



**SHPSHD611**  
6'6" - 11'6" Heavy Duty Post Shore  
46.3 lbs

PART NUMBER	TESTED HEIGHT	RATED LOAD 3:1 SAFETY FACTOR
		Lbs
SHPSHD611	6'6"	7,750
	7'	7,400
	7'6"	7,050
	8'	6,700
	8'6"	6,350
	9'	6,000
	9'6"	5,650
	10'	5,300
	10'6"	4,950
	11'	4,600
	11'6"	4,200

Based on 3:1 Safety Factor



**SHPSHD1018**  
10' - 18' Heavy Duty Post Shore  
74.1 lbs

PART NUMBER	TESTED HEIGHT	RATED LOAD 3:1 SAFETY FACTOR
		Lbs
SHPSHD1018	10'	9,900
	10'6"	9,500
	11'	9,050
	11'6"	8,625
	12'	8,200
	12' 6"	7,775
	13'	7,350
	13'6"	6,925
	14'	6,500
	14'6"	6,075
	15'	5,650
	15'6"	5,225
	16'	4,800
	16'6"	4,375
	17'	3,950
	17'6"	3,525
	18'	3,100

Based on 3:1 Safety Factor