



# SAFETY NEWSLETTER

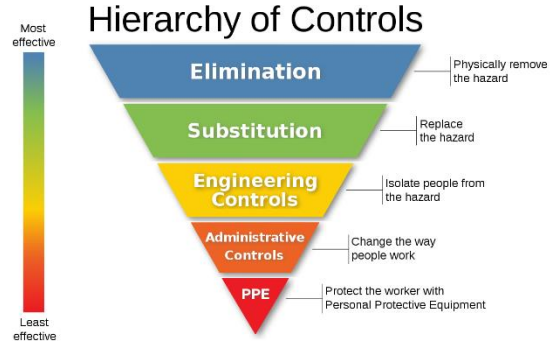


## San Diego Operations

### MAY 2023

Although Personal Protective Equipment (PPE) is the last line of defense, it is an important control to ensure the safety of our employees during operations. Purchasing high quality over quantity items provide significant benefits to our employee's that can prevent potential injuries.

Purchasing PPE for TKS employee's is one thing but ensuring the employee's wear them during operations is another. The EHS Department conducts daily inspections on all working projects to verify conformity across the board. By performing daily inspections, it encourages employee's to wear the correct PPE and at all times. For this month, we have identified the use of eye protection as a reoccurring infraction.



### What is ANSI Z87.1/Z87+?

When selecting safety glasses for eye protection, identify if the frames or lenses have a stamp of ANSI Z87.1 or Z87+. ANSI stands for American National Standards Institute, which is a nonprofit organization that coordinates standard functions and regulations for U.S businesses, consumer groups, and government agencies. Z87.1 is to identify the frames have passed certain high-mass and high-velocity tests and meets the standards for impact protector requirements for personal eye and face protection. Z87+ indicates the eyewear is even more protective, having passed more stringent high velocity impact testing.

On all working TKS projects, it is very critical that each employee is wearing Z87.1/Z87+ approved eye protection. Shaded Z87.1/Z87+ lenses may be worn during operations but is not permitted to be worn indoors. If an employee wishes to wear these types of lenses, they must have a pair of Z87.1/Z87 clear frames on their body they can switch to when entering indoors. Employee's are allowed to purchase their own eye and face protection or receive a pair each from the Environmental Health and Safety Department.

### TKS New Corporate Office

The San Diego team has a new address for headquarters and operations located in Spring Valley, California. For more details and address, please contact the San Diego management team. We look forward to this new journey at our new location!

### Turn Key Scaffold, LLC.

Tel: 619-642-0880  
Tel: 757-655-6459

8622 B Troy St.  
Spring Valley, CA 91977  
4541 Bainbridge Blvd  
Chesapeake, VA 23320

[www.TKSscaffold.com](http://www.TKSscaffold.com)  
[Mick@TKSscaffold.com](mailto:Mick@TKSscaffold.com)  
[Lucas@TKSscaffold.com](mailto:Lucas@TKSscaffold.com)



San Diego, CA TKS Employee's enjoying food and drinks as a reward for their hard work and safe work practices. Courtesy of our President/CEO, *Mick Ruis*. 25 May 2023 1:30 pm after EHS Meeting. Training was conducted by our newest EHS Technician, David Del Rio. **Training topic:** Housekeeping & Personal Protective Equipment

### New Documents?

EHS DEPARTMENT	<p><b>TKS-S-MS-001: TKS Muster Form</b></p> <p>EHS Department recreated the current muster sheet that includes more detailed information. Document is effective immediately and has been provided to management and foreman's.</p>	<p><b>Daily Discrepancy &amp; Corrective Action Log</b></p> <p>In accordance with (IAW) with NSI 009-07, the EHS Department has now utilized the form and tailored the document to TKS. Log displays discrepancies observed during inspections and corrective actions needed to remove the item. Similar to how prime companies such as BAE Systems SDSR, General Dynamics NASSCO, &amp; Continental Maritime of San Diego (CMSD) submit reports, this document is edited and submitted after each inspection and/or daily.</p>
----------------	--	---

Due to the hard work, dedication, and commitment to safe working conditions that our employee's have performed, our customers have acknowledged and awarded us with more projects! This was a company effort from the field employees, all the way up to the office team! Congratulations!

TURNKEY SCAFFOLD	<p><b><u>OUR COMMITMENT TO SAFETY</u></b></p> <p>Due to the experience gained from the installations throughout the vast locations and areas where TKS works, our customers benefit from our research and results obtained by exceeding the safety requirements from those locations/customers. We use the most stringent and current safety standards to create in-house policies and adhere to those standards to ensure we exceed expectations on every job site.</p>	<p><b><u>TKS CARES</u></b></p> <p>Our "WHY" for creating TKS Scaffold was always to create a business that had the highest standards and most comfortable work environment possible for our team. We never built TKS to just make a profit but to change the scaffold industry and trade by creating the first real brand in the scaffold industry.</p>
------------------	--	---

### Turn Key Scaffold, LLC.

Tel: 619-642-0880  
Tel: 757-655-6459

8622 B Troy St.  
Spring Valley, CA 91977  
4541 Bainbridge Blvd  
Chesapeake, VA 23320

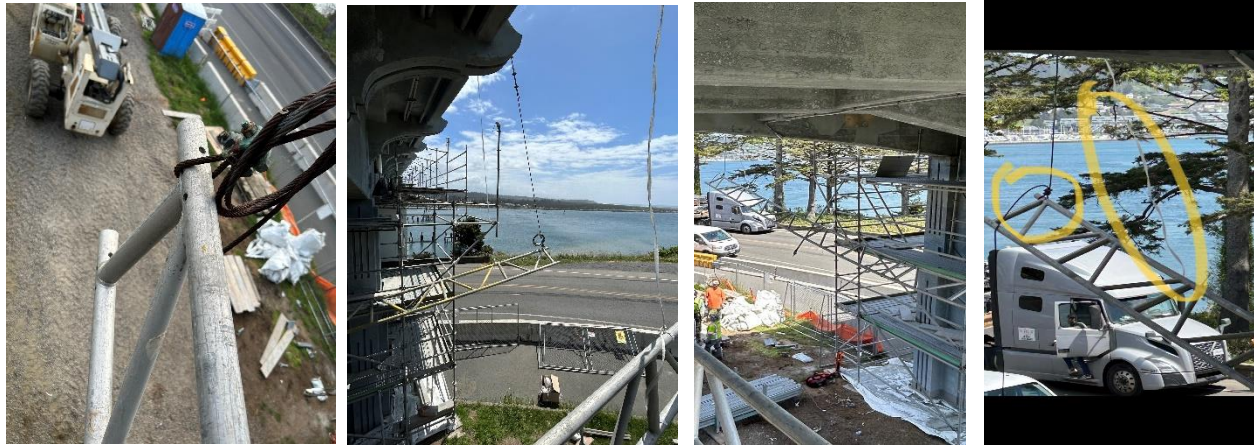
[www.TKSscaffold.com](http://www.TKSscaffold.com)  
[Mick@TKSscaffold.com](mailto:Mick@TKSscaffold.com)  
[Lucas@TKSscaffold.com](mailto:Lucas@TKSscaffold.com)

## NEAR MISS REPORT

**Location:** Portland, Oregon

**Project:** Yaquina Bridge

**Subject:** Hanging cable improperly secured on trusses; SPAN 2N of Tower Scaffold



On Tuesday 05/23/2023, Gonzalo Rodriguez (Production Manager) performed an inspection and noticed a truss with unsecured cables. Gonzalo immediately alarmed his team and safely secured them from the scaffold to observe the fault. After Gonzalo and his team reviewed the truss with the improper cable placement, they safely corrected the fault and ensured safe working conditions during the erection phase.

### What could have happened?

The truss might have come loose from the unsecured cables and resulted in potential property damage or bodily injuries.

### What are the long-term corrective actions?

1. Game plan regarding proper securing of trusses.
2. Prior to securing the truss with cables, identify the correct location to secure.
3. Thoroughly inspect the security of the cables to ensure the appropriate location and the integrity of the scaffold & truss is correct.

### What other actions can we do to avoid potential incidents?

Encourage employee's and Project Management Teams to self-report to help minimize potential incidents. By doing so, it allows Senior Management Teams to internally correct any hazards that may arise and eliminate involvement from external parties from issuing violations and/or non-compliant reports.

### Does this near miss require retraining?

Yes. This incident requires training to ensure employees understand the potential hazards that may arise if cables are improperly secured on trusses or scaffold components.

### Turn Key Scaffold, LLC.

Tel: 619-642-0880  
Tel: 757-655-6459

8622 B Troy St.  
Spring Valley, CA 91977  
4541 Bainbridge Blvd  
Chesapeake, VA 23320

[www.TKSscaffold.com](http://www.TKSscaffold.com)  
[Mick@TKSscaffold.com](mailto:Mick@TKSscaffold.com)  
[Lucas@TKSscaffold.com](mailto:Lucas@TKSscaffold.com)